



East & North Herts

Shared Waste Service

Your guide to waste and recycling services at flats and communal properties in East and North Herts



www.eastherts.gov.uk/bins-waste-and-recycling
www.north-herts.gov.uk/bins-and-recycling



**North
Herts**
Council

Welcome

Welcome to your waste collection service. In this leaflet you will find a guide to the types of bins provided for flats and communal properties. These bins are shared between multiple properties and all residents have a responsibility for managing their waste and helping to keep bin areas tidy.

East and North Herts Councils are working together to help residents reduce waste and capture valuable recyclable materials. We know that a large proportion of material currently disposed of as waste could be recycled, helping to reduce what goes into your non-recycling bin. The changes also mean that we are complying with the government's **Simpler Recycling*** requirements. Packaging is becoming more recyclable and our service changes support new government legislation affecting packaging over the coming years.

This is your guide to what can go in each of your bins, as we have a lot of different bins colours in the districts, we are describing your bins by what goes in them, not colour. Please check your bins for stickers, if you believe your bins need stickers, we will happily provide these for you.

You may find transporting your recyclables to your bins is easier with a reusable bag. Where possible we would prefer if your recycling is placed in your bins loose, this makes it easier for it to be sorted.



Meet the Crews

We ask that every one of our team is treated with the kindness and respect we all deserve at work. Whether they are out in the streets collecting recycling and rubbish or keeping town centres clean, our teams are working hard to deliver vital services for the community.

*www.gov.uk/government/publications/simpler-recycling-in-england-policy-update

Cardboard and Paper

Packaging is becoming more recyclable as manufacturers move away from plastic – and this bin gives you the space to recycle it all.

Recycling your cardboard and paper means we can send this material to be made into new products. It reduces the need to cut down trees, benefiting the environment and helping to keep service costs lower.

1 Top tips

Don't forget items found in other rooms in your house – like toilet roll tubes.



2 Top tips

To fit more in your bin, break up your cardboard boxes.



**YES
please**



**NO
thank
you**



- ✓ White paper and newsprint
- ✓ Magazines and leaflets
- ✓ Corrugated cardboard
- ✓ Cardboard packaging, cereal boxes and sleeves
- ✓ White and brown envelopes

- ✗ Metals
- ✗ Glass
- ✗ Plastics
- ✗ Food waste or liquids
- ✗ Laminated paper

Keep up-to-date

Follow us on social media for more recycling tips, service information and seasonal collection information on Facebook [@EastHertsDC](#) and [@northhertsdc](#)



Mixed Recycling

You can now put loose plastic bags and wrappings into your mixed recycling bin. You may have noticed already that much more packaging is recyclable; this means you do not need to dispose of it in non-recycling bins.

Make sure all your recyclables are empty and free from food residue; a quick rinse will also help keep your bins cleaner and reduce the chances of odours! The better-quality recycling we send for processing the more cost effective our services are.

1 Top tips

Separate plastic film lids from trays as these are recycled separately.

2 Top tips

Very small items can't be recycled, so ball up your tin foil together to a tennis ball size and put small plastic sweet wrappers inside a larger bag like a crisp packet.

3 Top tips

Squashing and crushing your recyclables means space. Plastic bottles can be squashed with the lids left on to save space!

**YES
please**



**NO
thank
you**



- ✓ Tins, cans and foil
- ✓ Glass jars and bottles
- ✓ Plastic bottles, tubs and trays
- ✓ Plastic bags and wrappings (next page)
- ✓ Cartons

- ✗ Paper
- ✗ Cardboard packaging
- ✗ Liquids
- ✗ Food waste, including residue
- ✗ Textiles
- ✗ Batteries

Why are we collecting plastic bags and wrapping?

Almost all plastic comes from fossil sources, which every year, is creating millions of tonnes of greenhouse gases that harm the planet.

The more we recycle, the more recycled materials can be used to make new products.

All items should be **clean** and **free of food**.

**YES
please**

Please **do not** include the following.

**NO
thank
you**

Plastic bags

- ✓ Carrier bags
- ✓ Salad, fruit and vegetable bags
- ✓ Bread and cereal bags
- ✓ Flower bags

Confectionary wrappers

- ✓ Chocolate, sweets, biscuits and cakes wrappers

Foil lined packaging

- ✓ Crisp and snack packets

Film and sleeves

- ✓ Plastic sleeves for bottles and jars

Outer wrapping

- ✓ Bubble wrap
- ✓ Cling film

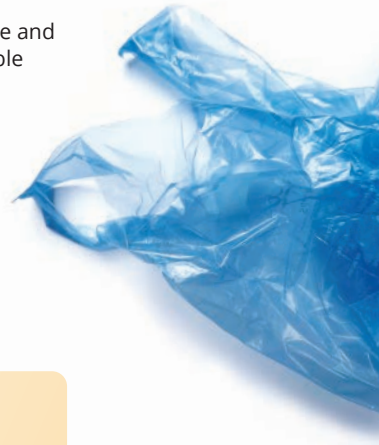
✗ Balloons

✗ Blister packs, pills and tablets packaging

✗ Compostable and biodegradable bags and wrapping

✗ Disposable gloves and masks

✗ Foam or polystyrene



4 Top tips

Please don't overfill your bins or present additional non-recyclable waste; this will not be collected.

Visit our website

For more information about your service, visit your council's website. You can also get information of your collection days, additional services and a complete A to Z of what material goes where. www.eastherts.gov.uk and www.north-herts.gov.uk



Food Waste Caddies



Kitchen
caddy

Recycling all your food waste weekly is important and the easiest way to get the most out of your recycling service. Using your caddy every week will make managing your waste easier and will help us recycle even more... together!

When recycled, food waste can be turned into something useful. Your food waste generates natural forms of energy, such as biogas, an excellent alternative to fossil fuels and a fertiliser/soil conditioner which is used on fields locally.

1 Top tips

For hints and tips on reducing food waste and saving up to £720 per year visit:
www.lovefoodhatewaste.com

2 Top tips

Using a caddy liner is optional but means you can transport your food waste to your shared food waste bin they can reduce smell and spills if tied too!

**YES
please**

- ✓ Uneaten food and plate scrapings
- ✓ Raw, cooked meat and bones
- ✓ Raw, cooked fish and bones
- ✓ Dairy, cheese, eggs, and shells
- ✓ Tea and coffee bags, leaves and grounds
- ✓ Grains, pulses, rice, pasta and beans
- ✓ Bread, cakes, pastries, and pies
- ✓ Raw, cooked fruit and vegetables, peelings and pips

**NO
thank
you**

- ✗ Packaging of any kind
- ✗ Liquids such as milk
- ✗ Oil or liquid fat
- ✗ Any material that is not food waste

Compostable Liners

You can purchase compostable liners from most supermarkets or online, but please ensure they show the seedling logo. This shows that they are composting compliant.



*shared food waste bin

Non-recyclable Waste

To get the most out of your collection service, recycle as much as you can. Using all of your bins and ensuring you recycle your food waste every week.

Clothing and textiles that are in good condition can be donated to charity shops and sold for reuse to help local causes. Clothes and other items can be sold on sites such as Vinted or eBay, some shops will even accept bagged textiles in exchange for money off new items. Clothing banks can also accept items that will be recycled into products such as padding for chairs or car seats.

Batteries should not be included in any of your bins. Recycle them at local battery recycling points and at recycling centres in the batteries container.

1 Top tips

Recycling Centres are managed by the county council and locations can be found at www.hertfordshire.gov.uk

2 Top tips

You may want to find out more about reusable period products or reusable nappies. Visit: www.wasteaware.org.uk/reusablenappies
www.wasteaware.org.uk/reusableperiodproducts

**YES
please**



- ✓ Nappies
- ✓ Hoover bag contents
- ✓ Broken ceramics
- ✓ Tissues
- ✓ Kitchen roll and paper towels
- ✓ Wet wipes
- ✓ Pet waste and bedding

**NO
thank
you**



- ✗ Food waste
- ✗ Batteries – these can cause fires
- ✗ Cardboard and paper
- ✗ Textiles
- ✗ Plastic bottles, tubs and trays
- ✗ Glass jars and bottles
- ✗ Foil, cans, tins and other recyclable items

It is important that your waste is contained in the bins provided.

Please do not include large items of furniture or waste in your bins, this is not fair to other users. Break up large cardboard boxes. Please also ensure you familiarise yourself with what should go into each of your bins, contamination of any of your bins may mean they are not emptied!

Visit our website

For more information about your service, visit your council's website detailed below. You can also get information of your collection days, additional services and a complete A to Z of what material goes where.

Bulky waste collection service

Have a large item to dispose of? If your item cannot be donated or be reused by someone else, we can offer a bulky waste collection service. Items cannot be taken by crews, but you can book a collection on your council's website. This is a charged for service.

